



e-mail: steelequip@pgh.net



Light Gauge Aluminum Tension Leveling and Cleaning Line for Sale

Mfr: Herr Voss/Stamco

Age: 2001

Material: Aluminum Alloys 1100, 1235, 8111 [15,000 - 30,000 PSI Yield]

Strip Width: 30" - 64.5" Maximum Trimmed

Strip Thickness: .003" - .025"

Entry Coil: 16,000# Max with spool, 60" OD, 16" or 20" ID on Fiber Cores, 18.625" on 72" Long

Steel Spools. Entry Coil Payoff - Top or Bottom

Exit Coil: 16,000#Max with spool, 60" OD, 12", 16" and 20" ID on Fiber Cores

Line Speed: 100-1000 FPM

Elongation: 0 - 3%

Flatness: Less than 5 I-units

Slit Mults: 4 Max with 10" minimum slit mult width

Overhead Strip Cleaning Section: Built by Industrial Contractors Inc.

Line is operable and ready for immediate sale and removal.

Contact Dev Lemster for pricing and complete specification.

Location: North Carolina, USA

Over for photos and line drawing>>>>>>>>>>



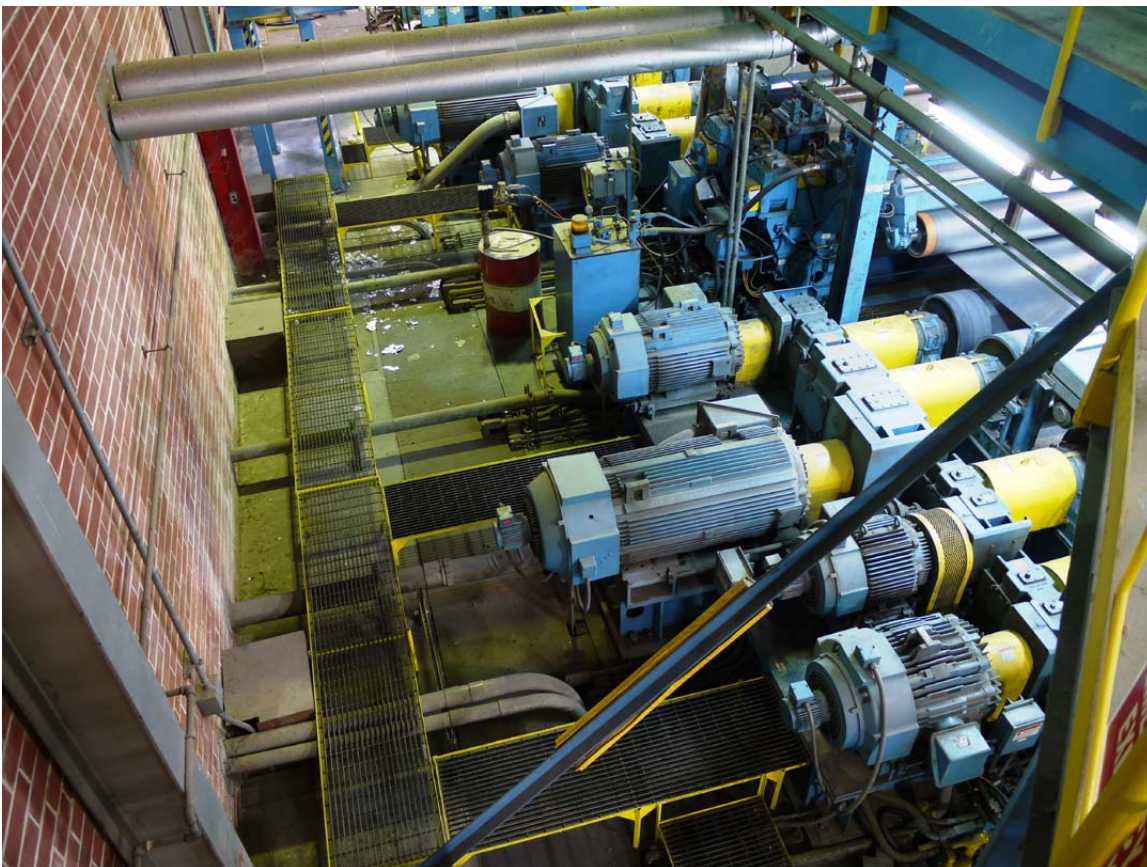
**Entry
Equipment**



**Entry End in
Front of Entry
Bridles**



**Tension Level-
ing
Section**



**Tension Level-
ing
Drive Motors
and
Gearboxes**



**Strip Cleaning
Drive Side**



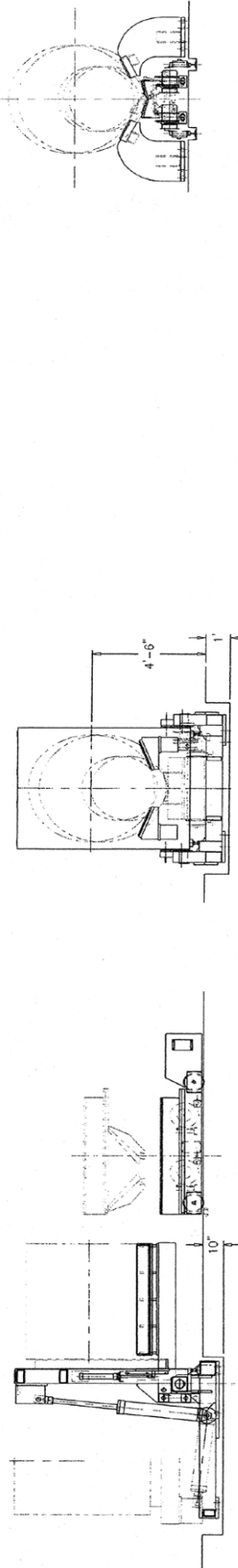
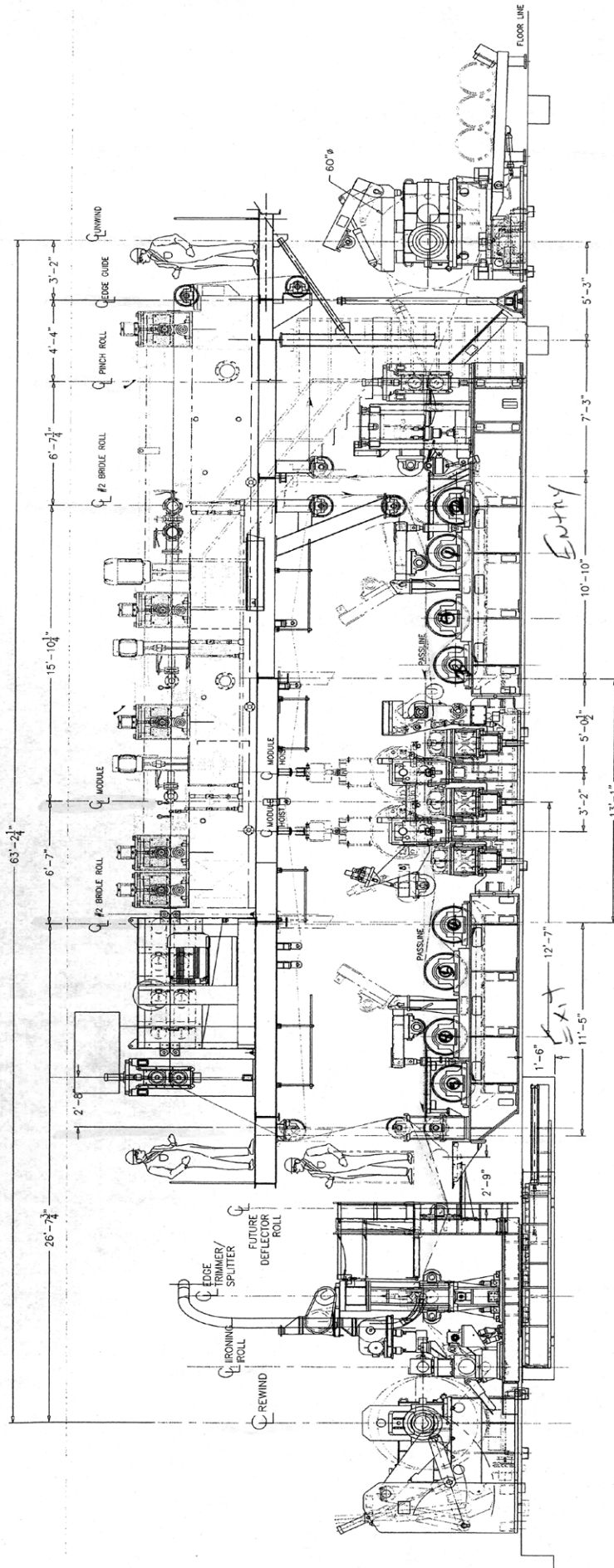
Strip Cleaning



Control Room



Exit Reel



LINE SPECIFICATIONS

MATERIAL	ALUMINUM
YIELD STRENGTH	15,000 LBS. TO 30,000 PSI
STRIP WIDTH	30.00 TO 64.50"
STRIP GAUGE	.003 TO .025
COIL WEIGHT	16,000 LBS.
COIL I.D.	16.00" TO 60.00"
COIL O.D.	12.00" TO 20.00"
THREADING SPEED	100 FPM
LINE SPEED	100/1000 FPM
HAND OF LINE	RIGHT HAND

NOTE: USER IS RESPONSIBLE FOR ALL
LINE SAFEGUARDING IN ACCORDANCE
WITH ANSI B11.18

GENSYSTMS HERR-VOSS Stamco <small>Geny Systems, Inc.</small>		DRAWING NO. 10895-010	SCALE 1" = 1'-0"	DATE 1-09-00	SHEET NO. 1 OF 1
REVISIONS 03-27-01 GENERAL REVISION 4-18-01 REMOVED STAIRWAY SUPPORT 06-05-01 UNLOADED MEZZANINE & STAIRS		CAL LINE ARRANGEMENT - ELEVATION 10895-010			